

# Lucas Street Light



www.lucasled.com



## Lucas II-L-84

The U-Tron Lucas Street Lights are the perfect street lighting solutions. Low energy consumption and high illumination makes this the ideal street light for any road, street, residential area or park. It can come with either internal or external power supplies. Lucas LEDs are the proven robust design to withstand the desert conditions of heat and sandstorm.

### Product Technical Data

#### General Information

Heatsink	6063-T5 aluminum alloy
Life Span	50000hr

#### Light Characteristics

Efficacy	106 lm/W
Beam Angle	120
CCT	5000-5500K
Flux	11,670
Color Rendering Index	85

#### Electrical Characteristics

Wattage	110W
Voltage	universal
Power Factor	0.937

#### Temperature

Operating Temp.	-40(min), 45(max)C
Storage	-40(min), 45(max)C

#### Product Dimensions

Lamp Length	686mm
Lamp Width	333mm
Lamp Height	100.5mm
Lamp Body Length	400
Max Pole Opening	72mm

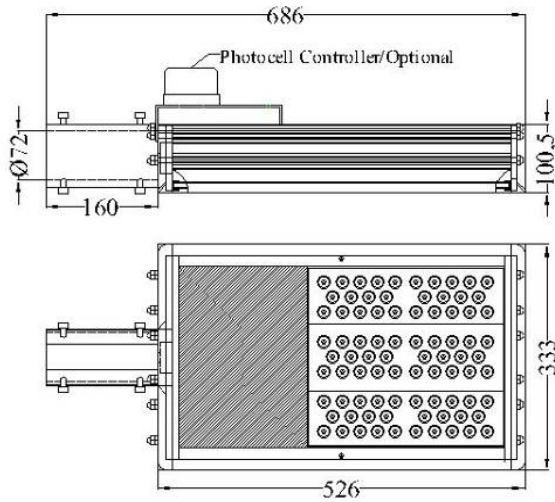
#### Ordering Information

Product Number	6800-L84-55R5110UNAT Lucas II-L- 84 Arm Twist
Product Name	Lucas Street Light II-L-84 LED 110W CR5 + Arm Twist
Product Ordering Name	
Pieces Per Pack	1
Packs Per Carton	1
Net Weight Per Piece	11.0 Kg



# Lucas Street Light

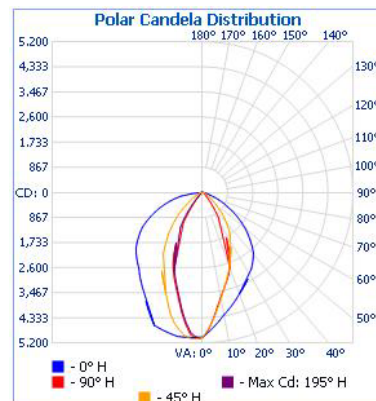
## Technical Drawing



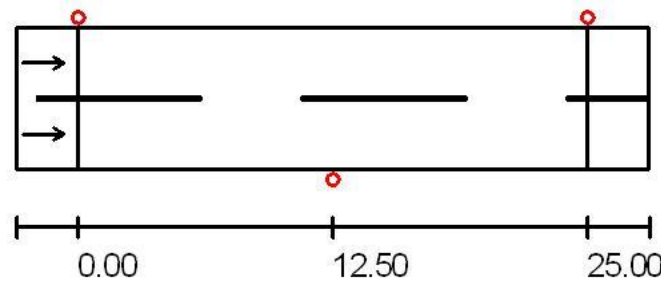
## Light Distribution Characteristics



Illuminance @ a Distance



Polar Candela Distribution



Pole to Pole Distance: 15-25Meters

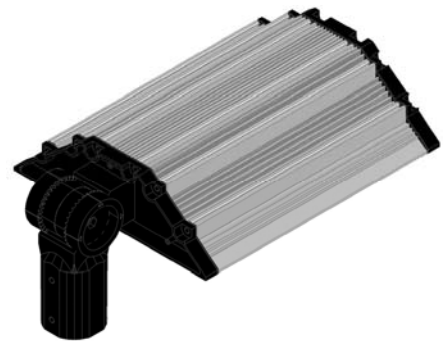
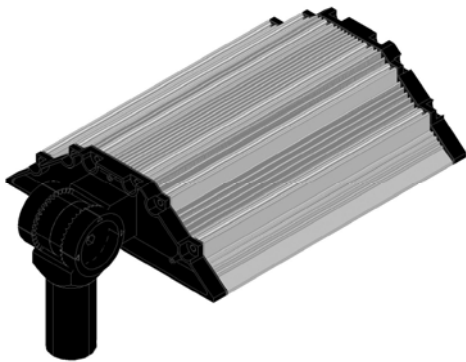


# Lucas Street Light

## U-Tron Arm Twist

U-Tron Arm Twist is designed to meet the smaller pole diameter requirements. This Arm Twist is necessarily designed to fit on the U-Tron Lucas Street Lights series. U-Tron engineering team had a success to make this excellent adapter to satisfy all the inquiries from various clients on how to install Lucas Street Light series on the smaller pole diameters.

U-Tron Arm Twist is made by aluminum that boosts the character of being lightweight, and corrosion resistant. It is composed of two pieces we called “Arm” that can be combined with an M8 bolt. The significance of the mechanically designed teeth on both side of the arm is to make the two pieces bonded tightly. It has also the ability to “Twist” at a desired angle ranges from 90 to 180 degrees. The Arm Twist has an internal diameter of 50 millimetres and 65 millimeters and has two M8 bolt to tighten it on the pole. The total weight of the Arm twist is 1.7 kilograms



Lucas II L 84 with Arm Twist 50mm internal diameter

Lucas II L 84 with Arm Twist 65mm internal diameter



# Lucas Street Light



Figure a



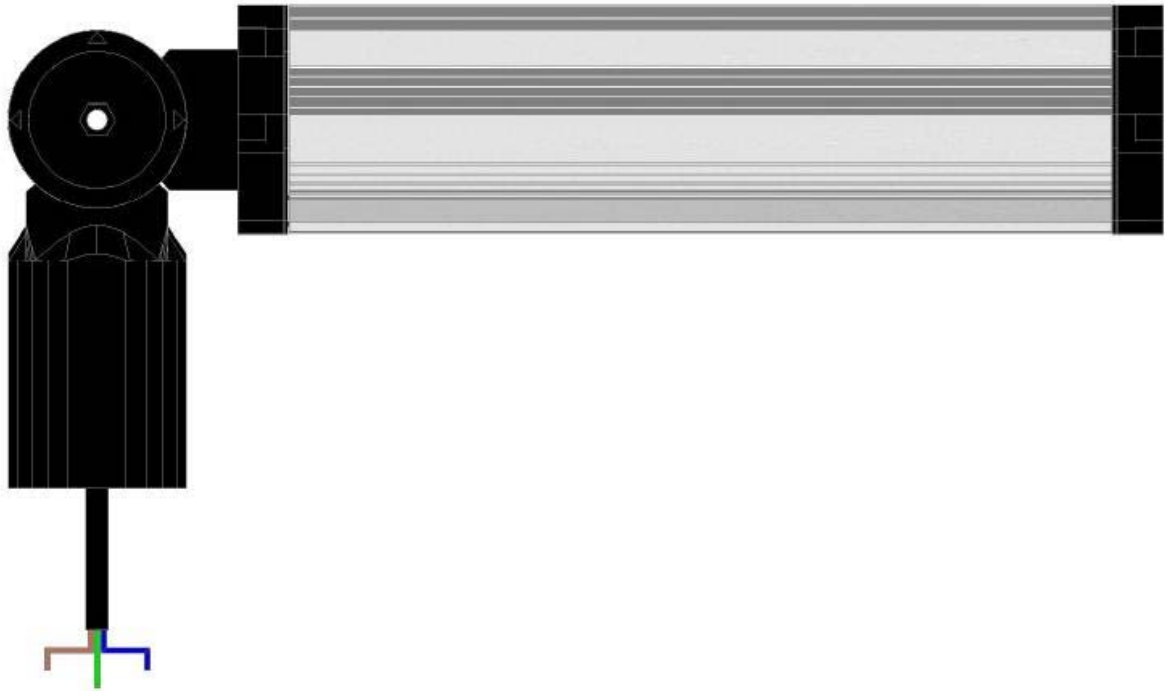
Figure b

## Installation instructions

1. First is to set the desired angle on the arm twist before tighten it on the M8 bolt and an M8 nut on the other end
2. After the two pieces is combined perfectly, insert the other end of the Arm Twist to the Lucas Street Light and tighten it by screwing the three M10 bolt from the Lucas Street Light
3. The whole light (fig.b) now can be installed on a pole smaller than 50mm diameter
4. After positioning the light the two M8 bolt should be tighten it properly.



# Lucas Street Light



Wiring Code:

IEC Standards (North American Code)

Brown = Live (Black)

Blue = Neutral (White)

Green Yellow = Ground (Green Yellow)

